

VOL 62 NO. 7 JULY 2010

B&B

THE OFFICIAL PUBLICATION OF
Washington State Nursery & Landscape Association

Washington's Public Parks
Rich in History. Vital Today!



(Left) Jessica Bloom, CPH (NW Bloom - Ecological Landscapes) shares her experience of donating her time and knowledge for the Mill Creek Veteran's Monument. For more information go to page 12.

(Below) *Acer pensylvanicum* 'Erythrocladum' is a sneak peak at what you will find at Albers Vista Garden in Bremerton. For more information turn to page 14.

Cover Photo: Albers Vista Garden.

Contents

Features

8 Comprehensive Immigration Reform

It's a Business Issue!

10 A Stroll Through the History of Washington Public Parks

12 A Community Garden to Remember & Reflect

The City of Mill Creek's Veterans Monument

14 Albers Vista Garden

An Oasis in Bremerton WA

16 Metro Parks Commitment to Sustainability



Acer pensylvanicum 'Erythrocladum'

Columns

- 4 From the President
- 5 Legislative Update
- 6 Executive Director
- 20 Bugs & Blights

Departments

- 5 New Members
- 7 Member Notes
- 23 The WSNLA Post
- 24 Industry News
- 26 CPH News
- 27 Chapter News
- 28 Classifieds
- 30 Calendar of Events

B&B

THE OFFICIAL PUBLICATION OF
Washington State Nursery & Landscape Association

July 2010
VOL 62. NO. 7

Editor Breanne Chavez

Published Monthly By:
Washington State Nursery
& Landscape Association
34400 Pacific Hwy S., Suite 2
Federal Way, WA 98003
800.672.7711
fax 253.661.6058

Subscription Price: \$39 Annually

Advertising agency rates recognized. WSNLA reserves the right to refuse any ads which are misleading, unethical, contrary to WSNLA policy, or which do not pertain to the nursery and landscape industry.

© 2010, Washington State Nursery and Landscape Association

Executive Director
Jeanne McNeil, CPH
e-mail director@wsnla.org

Finance & Operations Director
Holly Osborne, CPH
e-mail holly@wsnla.org

Communications & Promotions Director
Breanne Chavez
e-mail breanne@wsnla.org

Deadlines
News Classified ads Advertising
5pm the 10th of the month preceding the first-of-the-month publication. To place an advertisement, contact Breanne at (800) 672-7711 or breanne@wsnla.org.

www.wsnla.org



Interested in sharing your opinions and comments with B&B readers? If you take the time to share your thoughtful comments, WSNLA will be sure to share them with B&B readers. Please submit to breanne@wsnla.org or by fax at (253) 661-6058. Deadline: 10th of each month.

FEATURE

[History of
Washington
Public Parks]

Albers Vista Gardens

AN OASIS IN BREMERTON, WA



Albers Vista Gardens. Photo taken during Fall 2008.

by Kate Easton, CPH Garden Vision, Inc, Port Orchard & Board Member, Albers Vista Gardens.

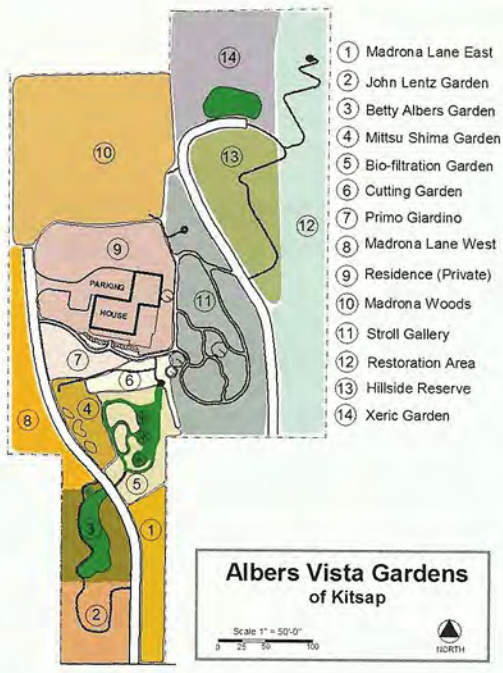
Once a horse pasture, extensive lawn area and a monoculture of Himalayan blackberry, Albers Vista Gardens transformed to a vibrant, botanically rich and aesthetically pleasing landscape embellished with a diverse horticultural mix of colors and textures and remnant native woodland. Guided by the desire to create a sustainable landscape, Albers Vista Gardens is a vision that has become a reality during the last eleven years through restoration and preservation plantings and the hard work of the property owners, John Albers and his wife Santica Marcovina.

Located on a southwest-facing hillside in Bremerton, WA overlooking Port Washington Narrows, Albers Vista Gardens is an oasis of common and unusual horticulture specimens artfully arranged. Color, texture and views make the fourteen topography- and theme-divided gardens a visual delight year round. Gently curving paths of either porous finely crushed granite or granite stepping stones surrounded with woolly thyme connect the Stroll Garden, Cutting Garden, Bio-filtration Garden and John Lenz Garden and others to introduce visitors to what is possible in a Northwest landscape. Carefully placed artwork creates

focal points and adds decorative touches. Northwest natives along with climate-appropriate non-native ornamentals from around the world form the horticultural collection of this sustainable landscape.

Plants selected for the collection meet the goals of ecological diversity, natural disease and/or pest resistance, environmental sustainability and contribute to a botanically rich landscape while minimizing the impact to the environment and people, in the present and future. Together the gardens include 28 genera, 50 species, and 150 cultivars of conifers, 35 species and cultivars of maples, and approximately 50 cultivars of heaths and heathers. A diverse variety of perennials and other woody shrubs and trees make up the remainder of the collection. In addition to the botanical collection, horticulture, learning and research opportunities are additional goals of the garden.

To ensure the continuation and preservation of the collection, Albers Vista Gardens Foundation was incorporated in May 2007 as a 501(c)(3) charitable non-profit to support and guide the mission of the garden. The mission of the Albers Vista Gardens Foundation is the preservation, continued enhancement and display of the unique and botanically diverse plantings, to provide learning and



research opportunities in horticulture and to inspire and educate the public, particularly in regard to creation of sustainable landscapes and the selection and use of horticulturally exceptional plants for the Puget Sound region. The Foundation is managed by an all volunteer board comprised of professionals in horticulture, landscape design, and land management, all of whom are passionate about education, plants, beauty and community. Members of the Garden provide financial support for the mission, as well as volunteer support for activities. Volunteer opportunities include assisting with the newsletter, web page content and design, plant labeling, plant database maintenance, or photography. For those with other skills, member outreach, irrigation design and installation, or serving as a garden docent might appeal more. Others may want to adopt a section of the garden.



Although Albers Vista Gardens is only open to the public on special tours days May to October, special arrangements can be made for groups of 10 or more. Tours are conducted by a knowledgeable docent and are typically centered on a theme. Popular themes include conifers and exceptional plants for Northwest gardens. Tours are from 10 am to Noon, except the October tour starts at 2 PM. Reservations for tours are requested; please email albers1@comcast.net to reserve a place on a tour.

Annual Membership in the Garden is \$20 and includes access to all tours and events for the year. Suggested tour/event fee for non-members is \$10 per person. For groups of 10 or more, a suggested tour/event fee is \$7 per person. Donations of any amount gratefully accepted to further the mission of the garden. Additional information, including the remaining 2010 tours dates and topics are listed on the website, including photos can be found online at www.albersvistagardens.org.



From top to bottom) A shot of the Albers Vista Gardens path to patio. 2. This shot is of the Bett Alber's Garden. 3. This picture depicts the winter color and scenery taken at the Albers Vista Garden. Photos provided by Kate Easton, CPH.